

Predation of *Saimiri cassiquiarensis* (Lesson, 1840) (Primates: Cebidae) by *Spizaetus ornatus* (Daudin, 1800) (Accipitriformes: Accipitridae) in the Brazilian Amazon

Gerson Paulino Lopes¹, Diego Pedroza Guimarães¹ & Adriano Jaskulski²

The Ornate Hawk-eagle (*Spizaetus ornatus*) is an accipiter inhabiting rainforests, forest edges and gallery forests¹. Its distribution extends from Mexico to northern Argentina and Paraguay^{2,3}. In Brazil, the species once occurred in virtually every state, but due to habitat loss it has become rare outside of the Amazon region, and few are recorded in other regions of Brazil^{1,4}. The diet of *S. ornatus* was studied in Guatemala, Belize, Brazil and Peru^{5,6,7,8,9}. However, some isolated predation events have been reported^{10,11,12}. Its food choices include birds, mammals and reptiles, such as snakes and lizards^{8,9,13,12,14}.

Among the mammals, primates have been reported as prey^{5,15,10,9,11,12}, however, the predation records of primates in Brazil are rare. Here, we report the predation of a Humboldt's squirrel monkey (*Saimiri cassiquiarensis*) by an Ornate Hawk-eagle (*Spizaetus ornatus*), at the Amanã Sustainable Development Reserve (ASDR) (2°28'S, 64°45'W) (Figure 1), central Amazon. On August 28, 2013, a nest of *S. ornatus* was found during a survey of raptors in the ASDR. Inside the nest was a primate carcass without the skull and with some parts of the body covered with hair (Figure 2). The carcass was collected and taken to the Laboratory of Terrestrial Vertebrates of the Mamirauá Institute for Sustainable Development (MISD). Species identification was carried out through comparative morphology of the microstructure of the hair present in the specimen and the reference collection of hair at ISDM, revealing that the carcass belonged to a specimen of *S. cassiquiarensis*.

This is the first predation record of a primate by *S. ornatus* in the Brazilian Amazon, which confirms that the species has a variety of prey in their diet, including primates.

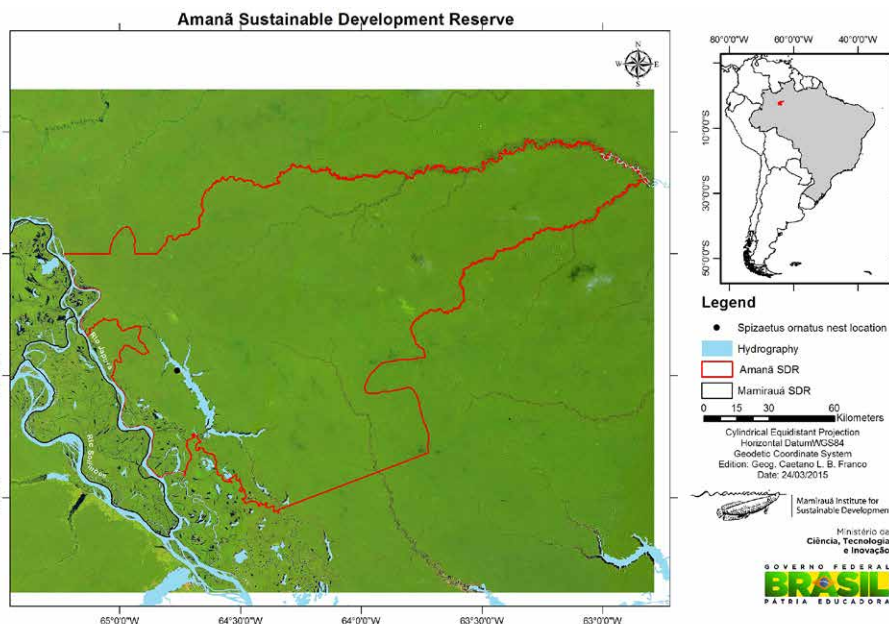


Figure 1. Map of the ASDR, with the *Spizaetus ornatus* nest location (black dot).

Source: Mamirauá Institute for Sustainable Development.

Acknowledgement

We thank the Mamirauá Institute for Sustainable Development and the Ministry of Science, Technology and Innovation, for financing the scholarships of the authors.

References

- (1) Sick, H. (1997). *Ornitologia brasileira*; (2) Ferguson-Lees, J. & D.A. Christie (2001) *Houghton and Mifflin Company*; (3) Restall, R. *et al.* (2006) *Christopher Helm*; (4) Ribon, R. *et al.* (2003) *Conservation Biology* 17: 1827-1839; (5) Lyon, B. & A. Kuhnigk (1985) *Wilson Bulletin* 97: 141-147; (6) Klein, B. C. *et al.* (1988) *The Condor* 90: 239-241; (7) Clinton, J. *et al.* (1991) *Journal of Raptor Research* 25: 19-20; (8) Madrid, J. A. *et al.* (1991) p.157-187 in: Witacre, D.F. *et al.* (eds). *IV Reporte de avance, Proyecto Maya: Uso de aves rapaces y de otros integrantes de la fauna como indicadores del medio ambiente, para el diseño de áreas protegidas y para fortalecer la capacidad del personal del lugar en orden a la conservación en América Latina*; (9) Robinson, S. (1994) *Biotropica* 26: 443-458; (10) Haymann, E.W. (1990) *International Journal of Primatology* 11: 327-337; (11) Boinski, S. *et al.* (2003) *Behaviour* 140: 1421-1467; (12) De Luna, A.G. *et al.* (2010) *Folia Primatologica* 81: 86-95; (13) Naveda-Rodríguez, A. (2004) *Revista de Ecología Latino-America* 11: 23-26; (14) Acosta-Chaves, V. *et al.* (2012) *Revista Brasileira de Ornitologia* 20: 451-452; (15) Stiles, G. & Skutch, A. (1989) *A Guide to the Birds of Costa Rica*.

Instituto de Desenvolvimento Sustentável Mamirauá, Grupo de Pesquisa em Ecologia de Vertebrados Terrestres. Estrada do Bexiga, 2584, Bairro Fonte Boa, CEP 69.553-225, Tefé, Amazonas, Brazil.

E-mail: gersonlps@hotmail.com

²Consórcio Strata LBR Direção, Supervisão Ambiental. Rua Aeroporto, 109, 1º Andar, Bairro Consolação, Bom Jesus da Lapa, Bahia, Brasil



Figure 2. A: Carcass of *Saimiri cassiquiarensis* (red star) in a nest of *Spizaetus ornatus*. B: Detail of carcass inside the nest. Photo: Adriano Jaskulski.